



N2 Elite User Manual

v2.1

Choose Your Device



[Android w/
NFC Writer](#)



[N2 Elite Base
\(Win/Mac/Linux\)](#)

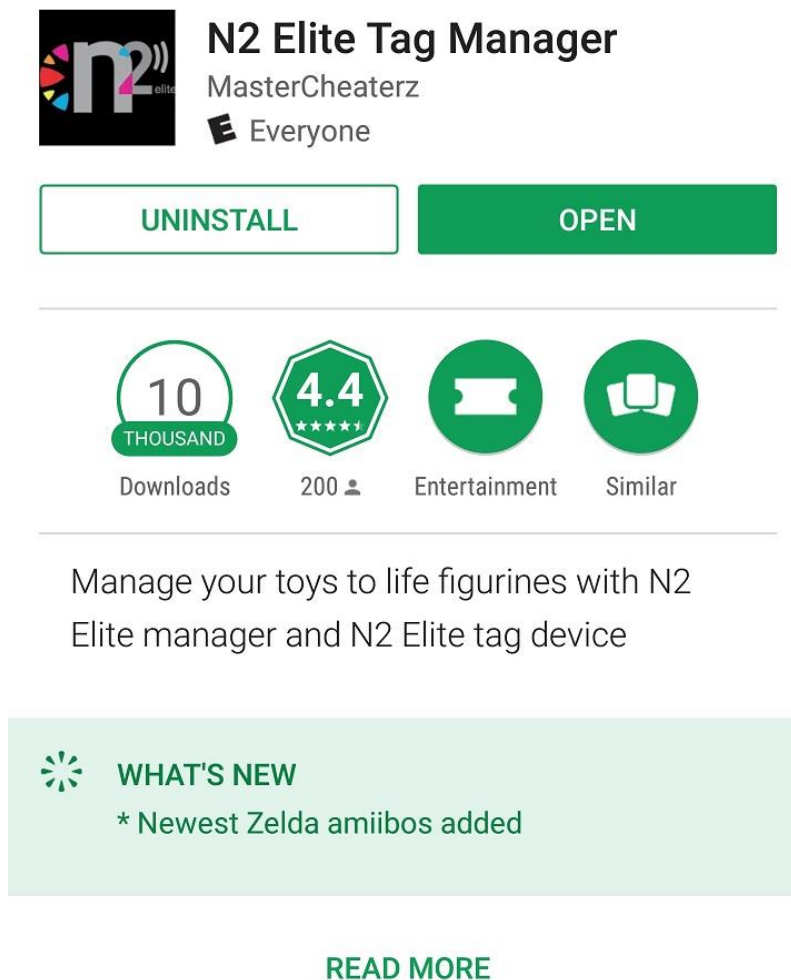
OR

[Skip to Usage Instructions](#)

[Skip to Cheats](#)

Android w/ NFC Writer

In order to use the Android app, your phone must be equipped with an NFC Reader/Writer.



The screenshot shows the Google Play Store interface for the 'N2 Elite Tag Manager' app. At the top, the app icon is a black square with a colorful 'n2' logo. To its right, the app title 'N2 Elite Tag Manager' is displayed in bold, followed by the developer 'MasterCheatz' and the age rating 'Everyone'. Below this are two buttons: 'UNINSTALL' in a white box with a green border and 'OPEN' in a solid green box. A horizontal line separates this from the next section, which features four circular icons: a green circle with '10 THOUSAND' for downloads, a green hexagon with '4.4' and five stars for the rating, a green circle with a white tag icon for the category 'Entertainment', and a green circle with a white tag icon for 'Similar' apps. Below these icons is a description: 'Manage your toys to life figurines with N2 Elite manager and N2 Elite tag device'. At the bottom, there is a light green banner with a starburst icon, the text 'WHAT'S NEW', and a bullet point '* Newest Zelda amiibos added'. Below the banner is a green 'READ MORE' link.

N2 Elite Tag Manager
MasterCheatz
Everyone

UNINSTALL OPEN

10 THOUSAND Downloads
4.4 200 ⭐⭐⭐⭐⭐
Entertainment Similar

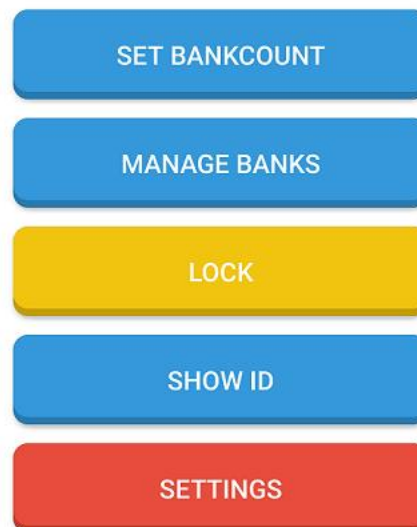
Manage your toys to life figurines with N2 Elite manager and N2 Elite tag device

WHAT'S NEW
* Newest Zelda amiibos added

READ MORE

The app can be downloaded and updated directly from the Google Play Store on supported devices.

Once the app is running, hold your **N2 Tag** against the center of the back of your phone for a few seconds until it is detected.

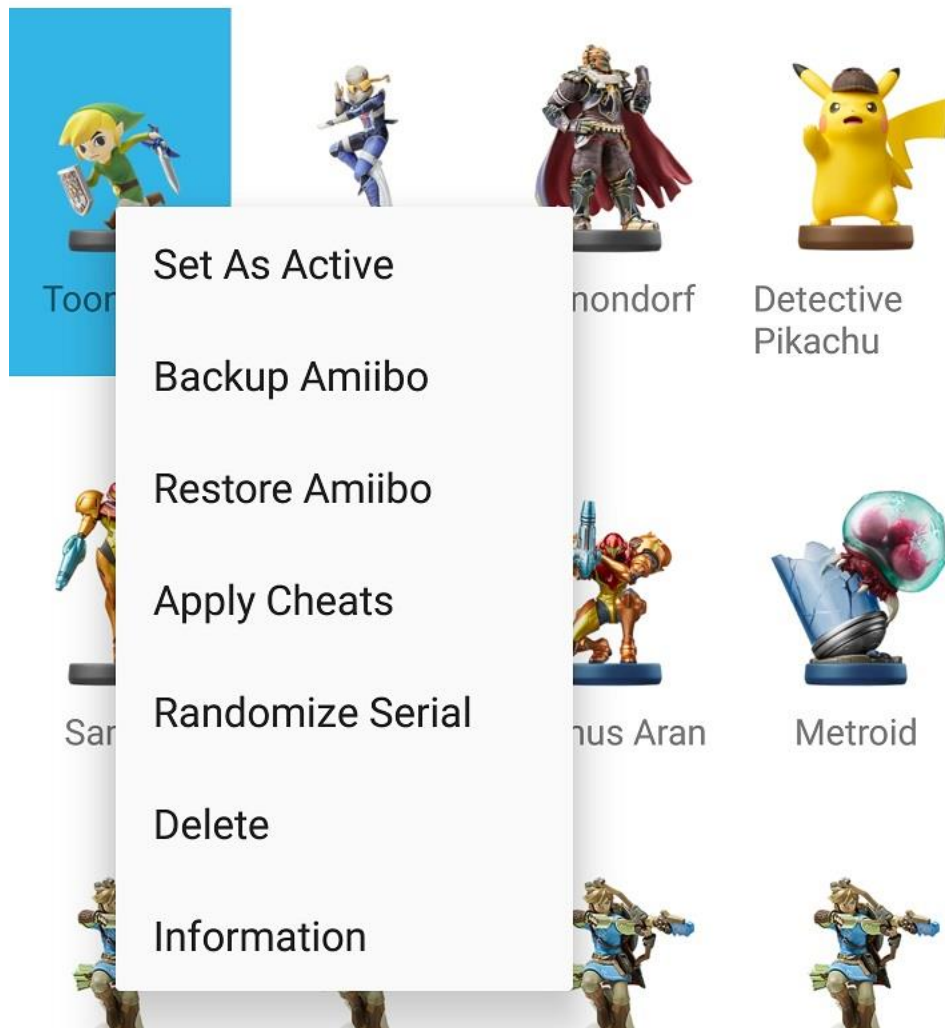


Keep in mind that you may need to remove your phone's **case** in order for it to work properly. If you are still having issues, make sure NFC is enabled and consult your phone's documentation for the best scanning location of the NFC reader/writer.

Setting the Bank Count will allow you to specify a precise amount (up to 200) of Amiibo available for your game systems to scan for on the [N2 Tag](#). Here are some things to keep in mind:

- If you plan on using the [N2 Tag](#) without a software companion (Android Device or N2 Elite Manager) to help select the Active slot, consider a smaller Bank Count so you can locate the Amiibo you want easily using the [Cycle](#) button on the [N2 Tag](#).
- Setting the number too high with empty slots will require you to complete a [Cycle](#) on the [N2 Tag](#) many times before it returns to slot #1
- Setting the number lower than a slot number with Amiibo data in it will **not erase those slots**, but *it will* make the slots inaccessible to your game devices.

Manage Banks allows you to view and modify the Amiibo written to the slots on your [N2 Tag](#). Holding down on a slot will present you with several different options.



Set As Active: This will mark the selected slot as **Active**, meaning any device that scans the **N2 Tag** will “see” the Amiibo written to the slot.

Backup Amiibo: This will allow you to save a file to your device containing the Amiibo in that slot and all the data that has been written to it from your console; including Smash Brothers A.I., Wolf Link’s level, and more!

Restore Amiibo: This lets you write Amiibo data to the slot that has been previously dumped from a real Amiibo or backed up from any N2 Elite software.

Apply Cheats: Checks online for available cheats. ([More](#))

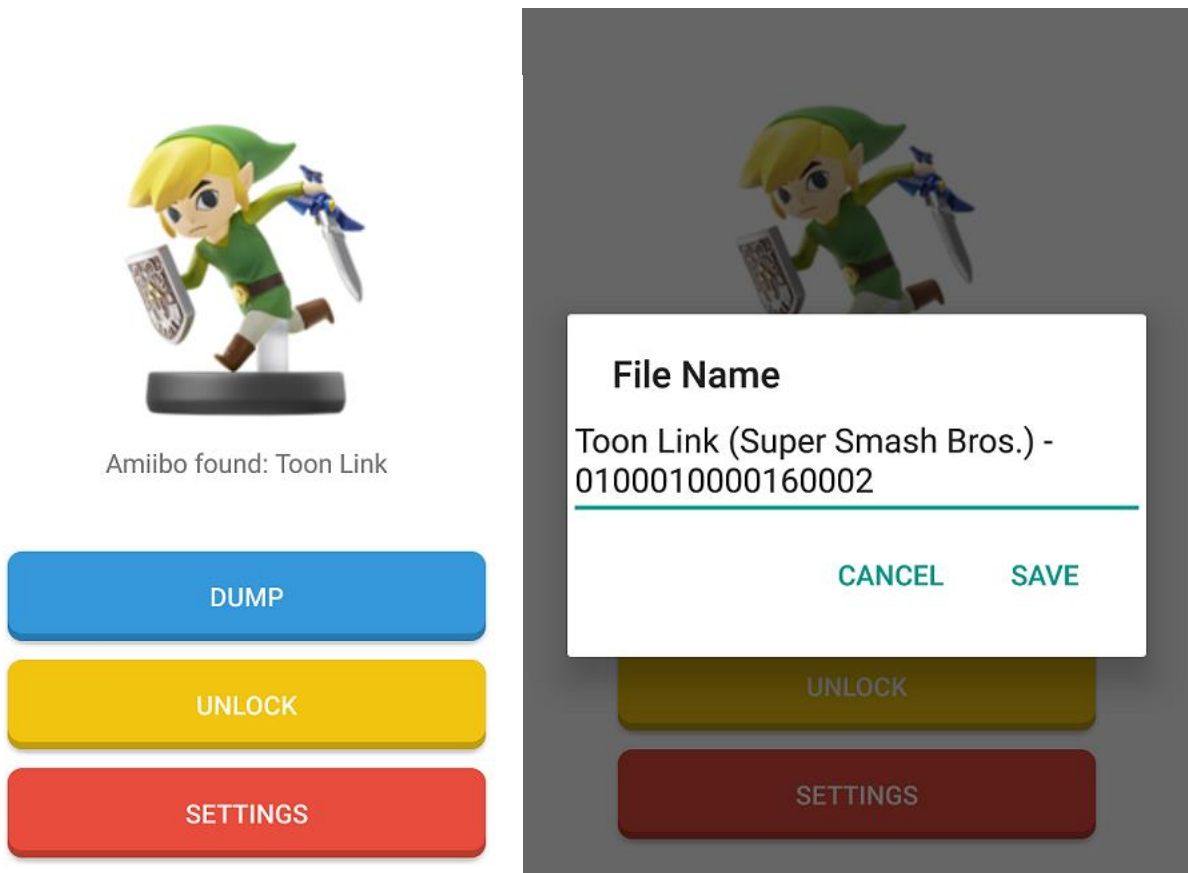
Randomize Serial: Randomizes the Amiibo Serial #. ([More](#))

Delete: This **completely erases** the data in the selected slot. Be sure to Backup any data you want to save!

Information: This shows detailed info about the Amiibo written to the slot.

Your **N2 Tag** may come with some Amiibo data pre-loaded. Feel free to Long-Press>Delete these slots to clear all the data and free up the slot for future use.

To dump a retail Amiibo, place it against the read-area of your phone and press **Dump**.



Choose a file name and press **Save** to copy the data to a file on your device.

Settings presents you with a few quality-of-life options:

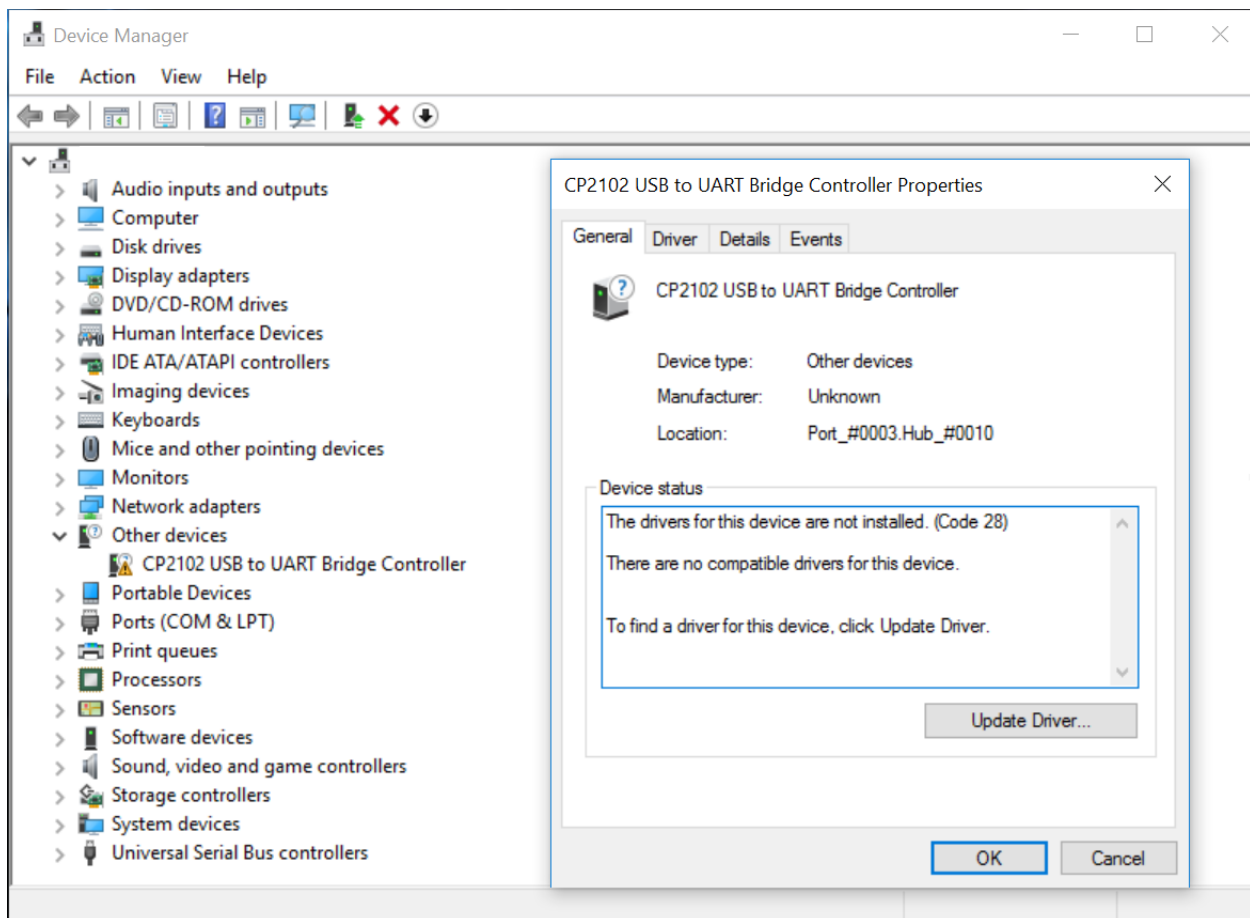
Default Settings	
Restore Folder /mnt	
Backup/Dump Folder /mnt	
Use Fast-Write Strongly Recommended	<input checked="" type="checkbox"/>

You can change the folders the app scans for and writes Amiibo data to as well as toggle the Fast-Write mode for older/slower Android devices.

[Continue to Usage Instructions](#)

N2 Elite Base

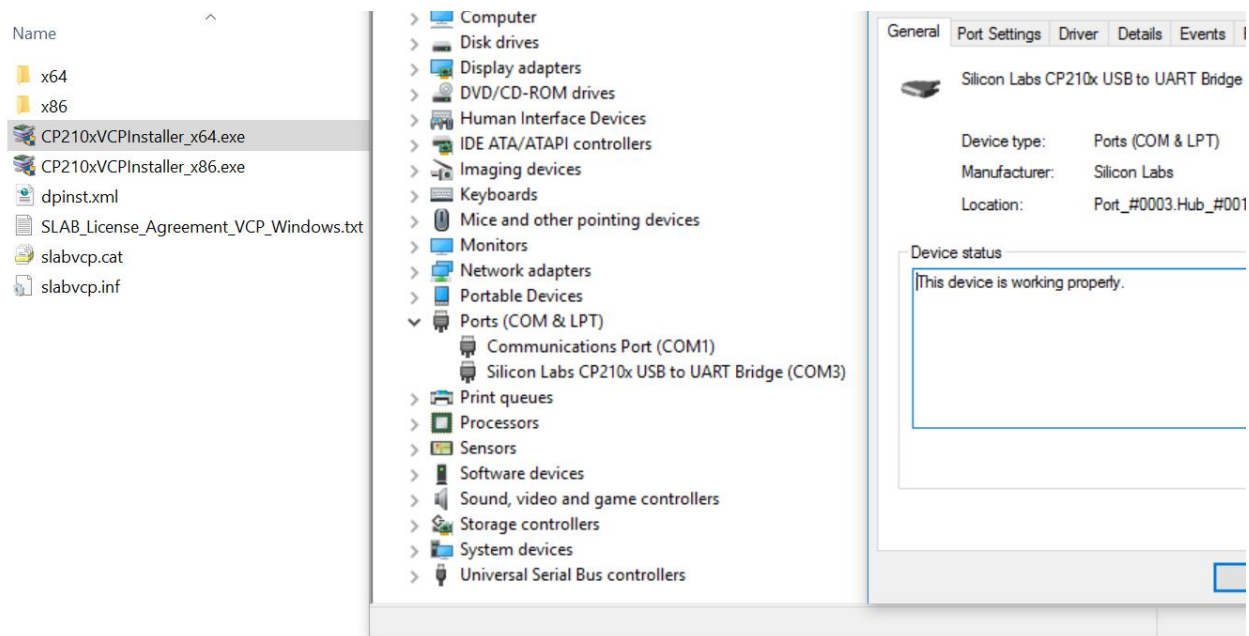
Before using the N2 Elite Base on your PC, you must first install the driver. Plug the Base in and open your Device Manager (Windows):



If Device Manager has a (!) or (?) next to the device, download and install the driver from here:

<https://www.silabs.com/products/development-tools/software/usb-to-uart-bridge-vcp-drivers>

After extracting the .zip file, you must use the appropriate installer for your system. **In most cases, you will need to use the x64 installer.** Only use the x86 installer if you are using a 32-bit operating system.



Once the device driver is installed and shows to be working properly, you can then move on to using the N2 Elite Manager Software.

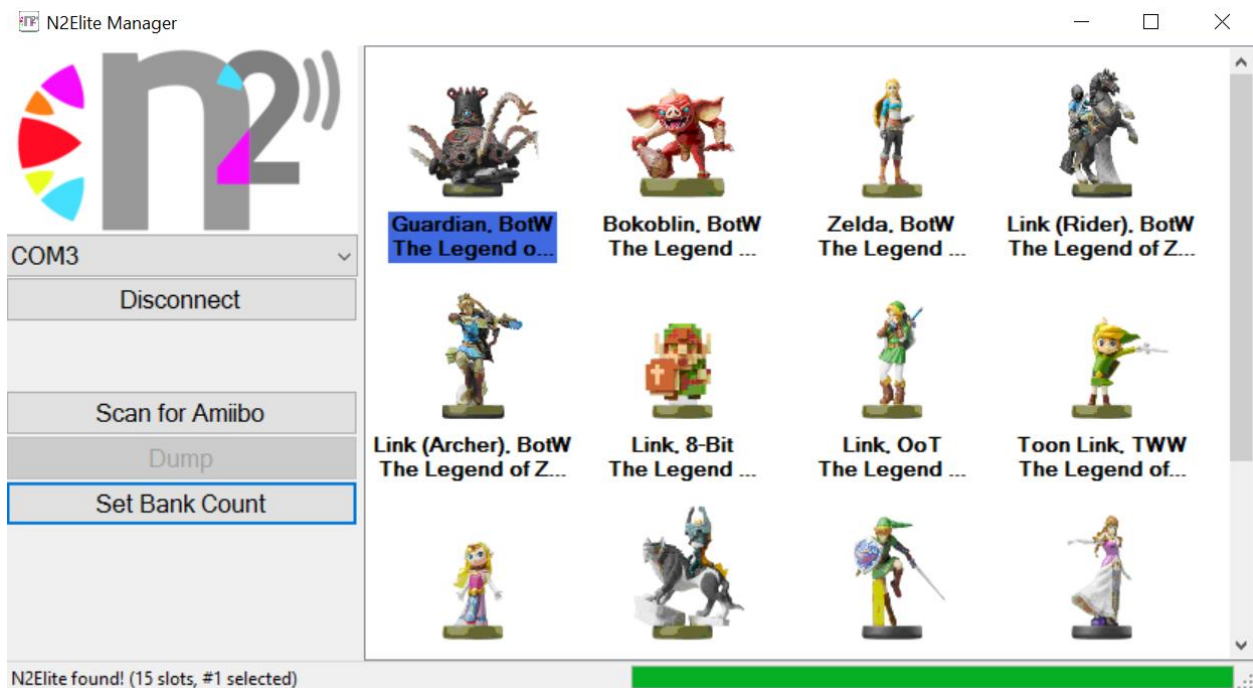
N2 Elite Manager

Extract the N2 Elite Manager and its accompanying files to an empty folder. ([Download Here](#))

(Linux and Mac users can use [Mono](#) to run the app)

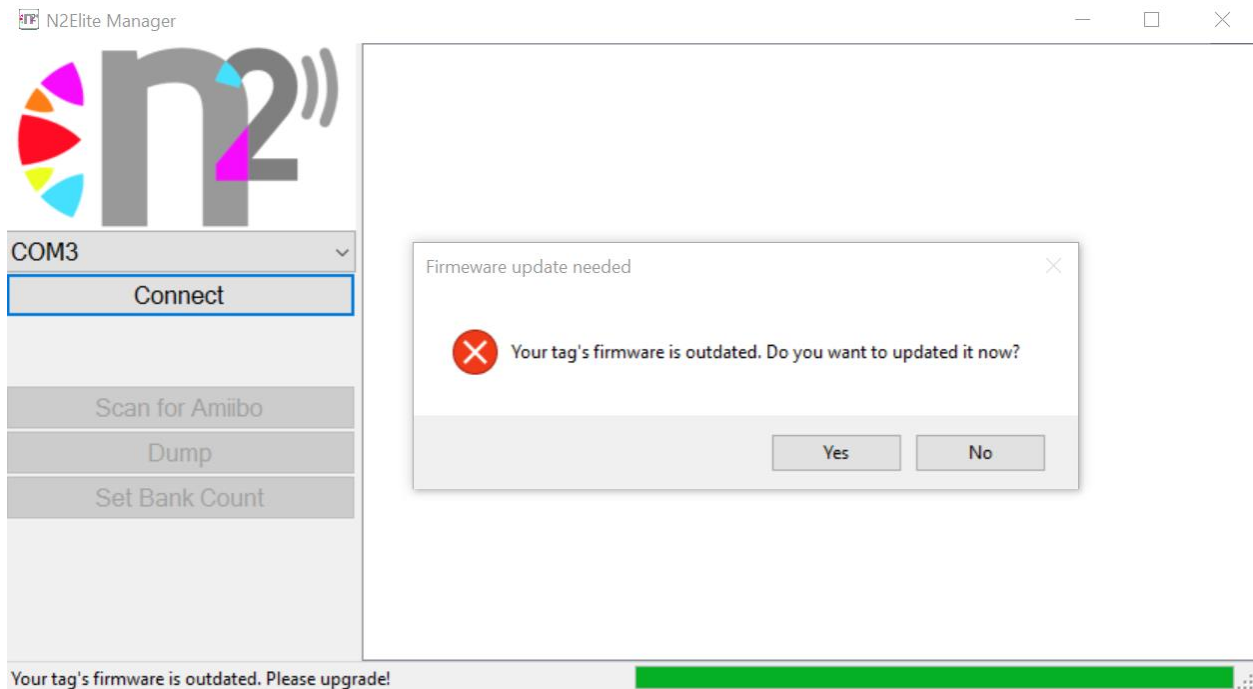
Make sure the N2 Elite Base is plugged in to a USB port and the N2 Tag is properly centered, with the logo facing up.

Open the N2 Elite Manager and press the **Connect** button:

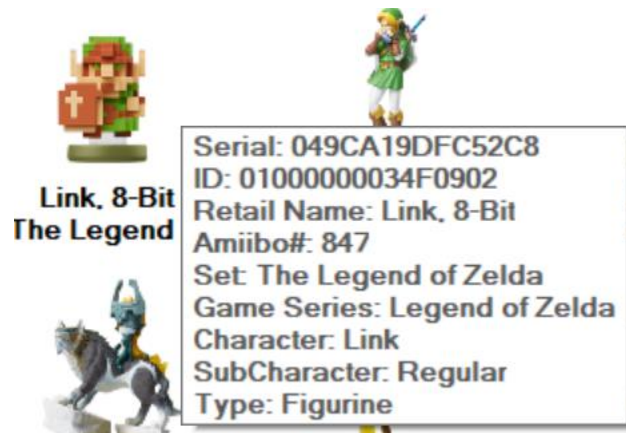


If you get the error “No tag found!” re-center the N2 Tag and try to **Scan for Amiibo** again.

Firmware update notifications will let you know if your **N2 Tag** needs updating. These are important updates that could affect functionality and should be installed when available.



Hovering over a slot will show you detailed information about the Amiibo contained inside it.



Right-Clicking a slot will present you with several options:

Set As Active: This will mark the selected slot as **Active**, meaning any device that scans the **N2 Tag** will “see” the Amiibo written to the slot.

Backup Amiibo: This will allow you to save a file to your PC containing the Amiibo in that slot and all the data that has been written to it from your console; including Smash Brothers A.I., Wolf Link’s level, and more!

Restore Amiibo: This lets you write Amiibo data to the slot that has been previously dumped from a real Amiibo or backed up from any N2 Elite software.

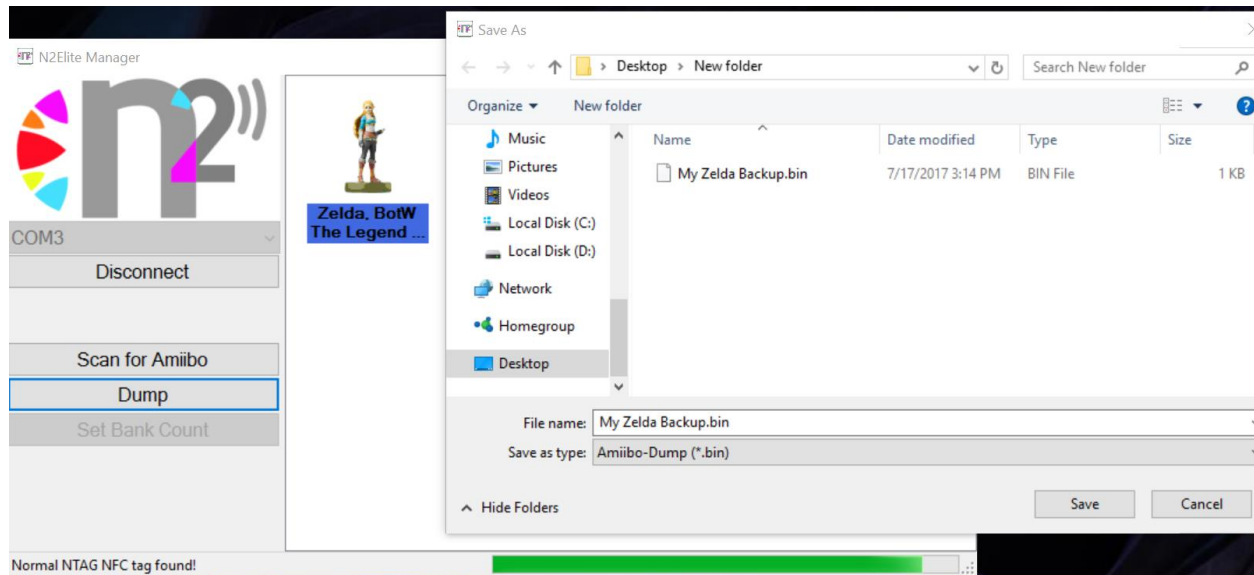
Apply Cheats: Checks online for available cheats. [\(More\)](#)

Randomize Serial: Randomizes the Amiibo Serial #. [\(More\)](#)

Delete: This **completely erases** the data in the selected slot. Be sure to Backup any data you want to save!

Your **N2 Tag** may come with some Amiibo data pre-loaded. Feel free to Right-Click>Empty these slots to clear all the data and free up the slot for future use.

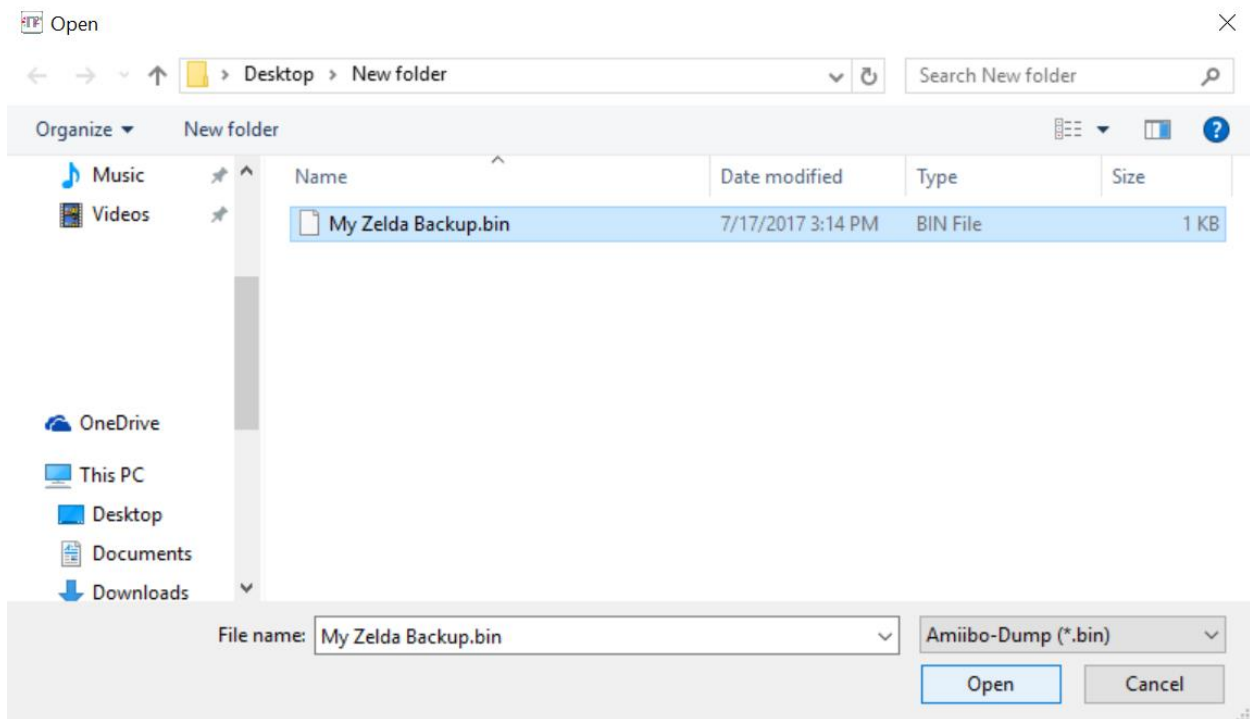
To dump a retail Amiibo, place the figurine on the N2 Elite Base and press **Scan for Amiibo**, then **Dump**.



Select a **location** and a **name** for the Amiibo dump, then press **Save** to store the backup for later use.

If the software cannot detect your Amiibo, try repositioning or rotating the Amiibo figurine, then press **Scan for Amiibo** again.

Writing an Amiibo to a slot is as simple as Double-Clicking (or choosing Restore) on a slot, navigating to the .bin file of your choice, and pressing **Open**!



If you receive a write error, re-center the **N2 Tag** then press **Scan for Amiibo** and try the operation again.

Setting the Bank Count will allow you to specify a precise amount (up to 200) of Amiibo available for your game systems to scan for on the [N2 Tag](#). Here are some things to keep in mind:

- If you plan on using the [N2 Tag](#) without a software companion (Android Device or N2 Elite Manager) to help select the Active slot, consider a smaller Bank Count so you can locate the Amiibo you want easily using the [Cycle](#) button on the [N2 Tag](#).
- Setting the number too high with empty slots will require you to complete a [Cycle](#) on the [N2 Tag](#) many times before it returns to slot #1
- Setting the number lower than a slot number with Amiibo data in it will **not erase those slots**, but *it will* make the slots inaccessible to your game devices.

Using the N2 Elite

The **N2 Tag** works with all NFC Compatible Nintendo devices, including the Nintendo Switch!



Simply place the **N2 Tag** over the appropriate read area (see device's manual for specific locations) and it will work exactly like a real Amiibo.

To change to the next slot, hold down the **Cycle button on the **N2 Tag** *before* placing it over the read area. This will change the Active Amiibo to the next slot number and attempt to scan it into the software.**

This is useful when you do not have companion software available to switch Active Slots, allowing you to cycle through your entire Amiibo bank without any additional hardware!

Game software can write back any progress or data to the **N2 Tag**, just like a real Amiibo. Simply place the Amiibo back on the reader location when requested, **making sure to have the same slot selected that you started with**, and the game will save the play data.

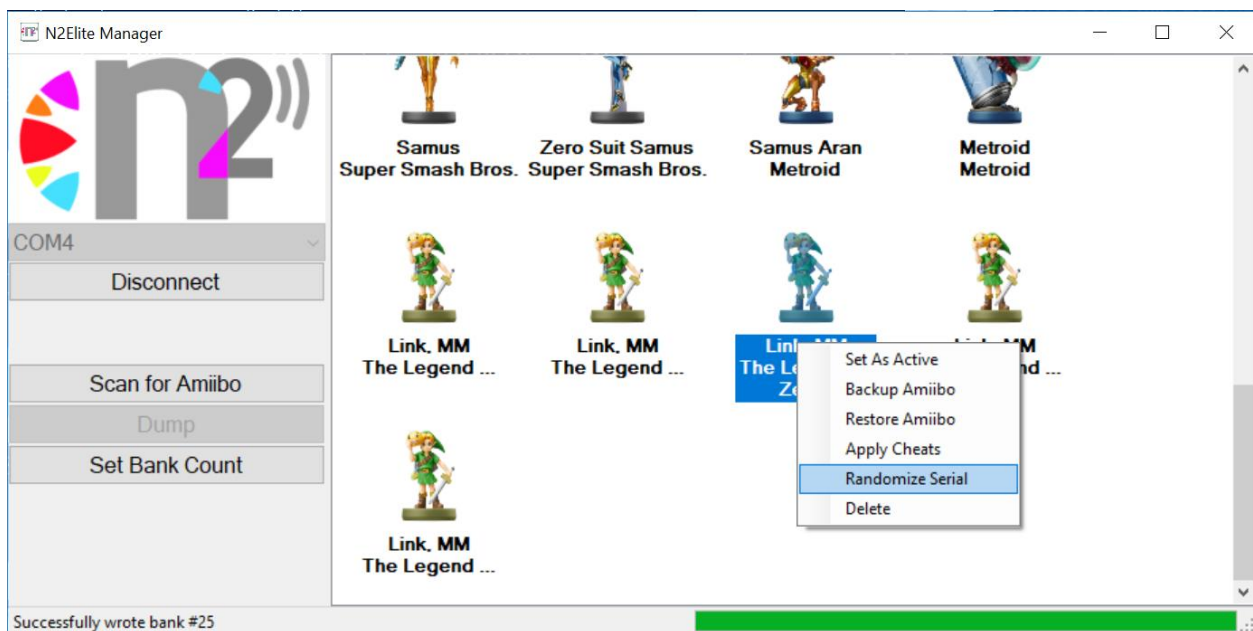
This data can then be saved with the companion software by choosing Backup on the appropriate slot.

Cheats and Randomizer

Version 2.1 brings cheat support to the N2 Elite!

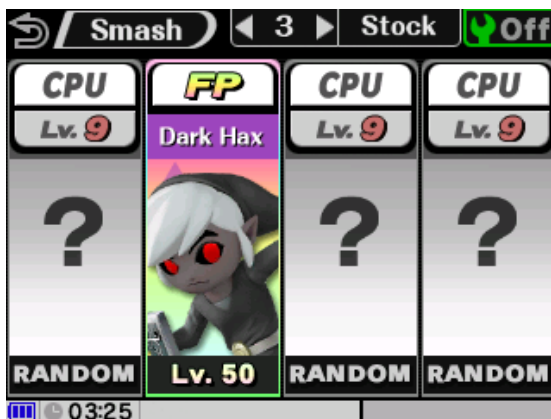
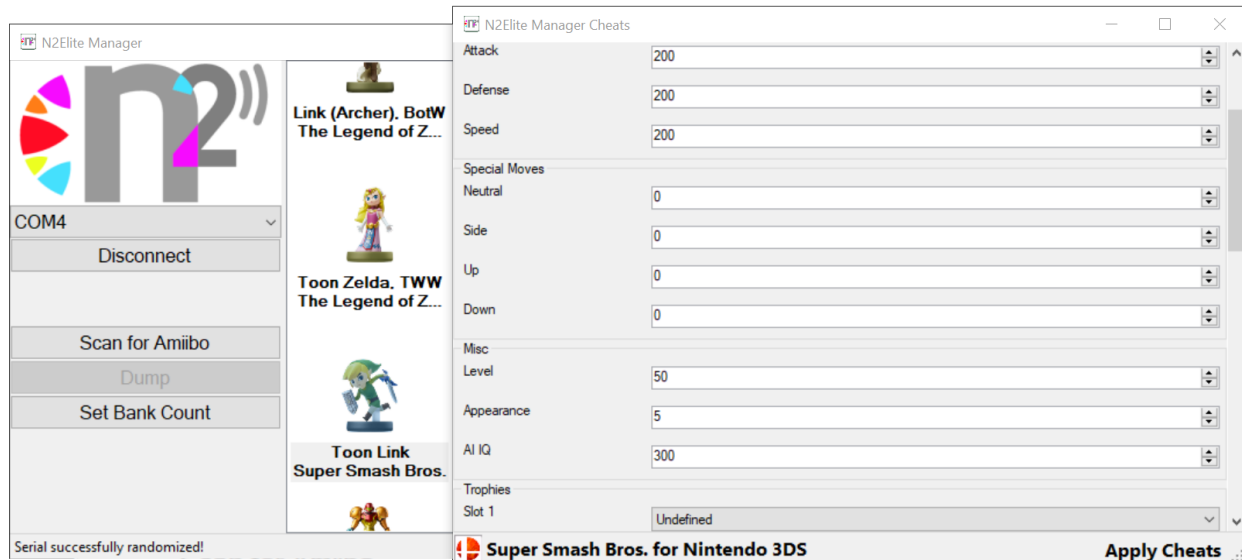
The Serial Randomizer will ensure you can quickly and easily “farm” many cosmetic or in-game items without having to worry about the lockout timer.

You can continuously randomize one slot or set several slots up with random serials ahead of time!



Please be sure to keep the tag against the NFC writer for the duration of the randomize or it may corrupt the data in the slot. If this happens, just restore the slot from a backup.

Apply Cheats will scan the slot for any game data and *automatically* load the appropriate cheat menu for it!



The Amiibo must have game data on it prior to opening the Cheats Menu or no matching cheat template will be found.

Please be sure to keep the tag against the NFC writer for the duration of the Cheat application. If you accidentally remove the N2 Elite from the base before Applying Cheats you must Disconnect then Connect before trying again.

Problems?

For any problems or questions, you can find the official support forums here:

<http://www.maxconsole.com/forums/official-n-2-elite-support-forum.171/>